



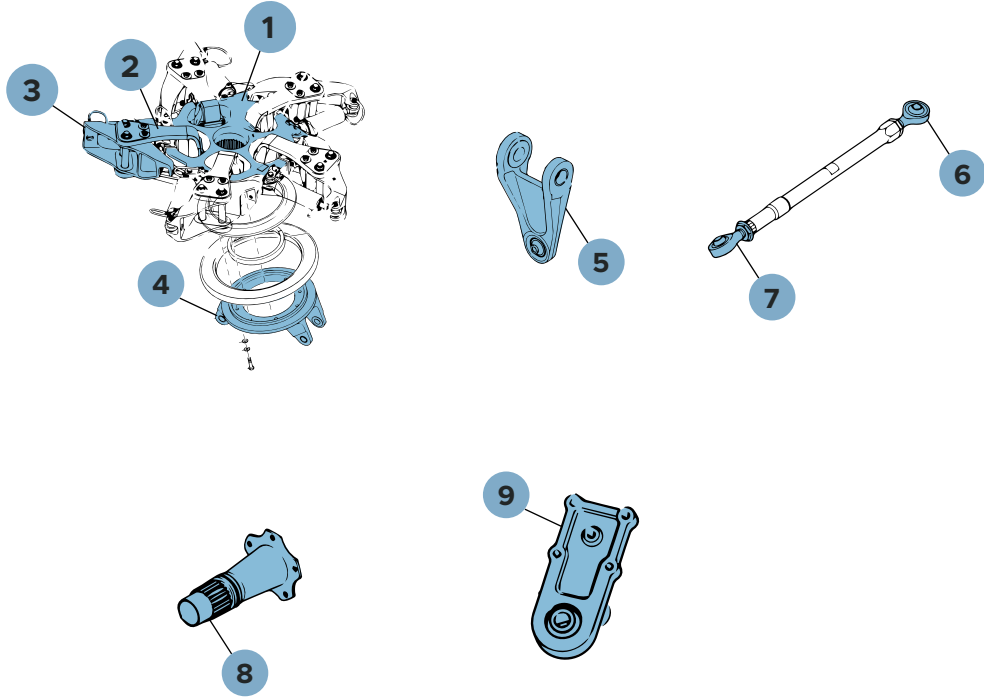
LEONARDO

Able Aerospace is an industry-leader in maintenance, repair, overhaul, exchange and PMA for rotor wing aircraft around the world. Don't see the repair or overhaul you're looking for? The opportunities are endless with Able – contact our team to learn more.

AW139

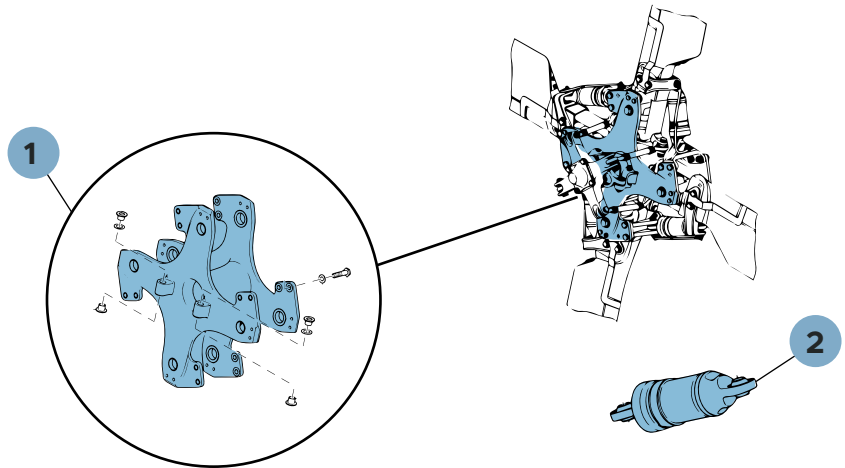
MAIN ROTOR HUB

- 1 M/R Hub | 3G6220A00332
- 2 Tension Link | 3G6220A00531
- 3 Pitch Control Lever Assembly | 3G6220A00732
- 4 Scissor Flange | 3G6220A00632
- 5 Lower Scissors | 3G6230A00932
- 6 Lower Rod Assembly | 3G6230A03632
- 7 Upper Rod End Assembly | 3G6230A01132
- 8 T/R Drive Assembly | 3G6320A09652
- 9 Upper Bracket | 3G6330400232



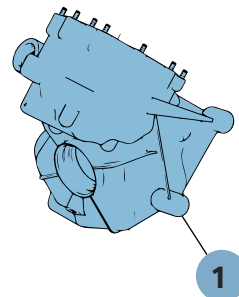
TAIL ROTOR HEAD

- 1 T/R Hub Assembly | 3G6420A00133
- 2 T/R Lag Damper | 3G6420V00455



IGB

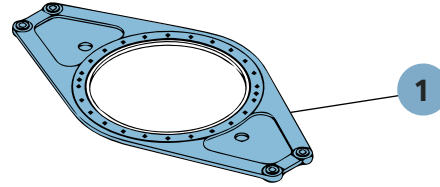
- 1 IGB Center Housing Assembly | 3T6521A05135



AW139

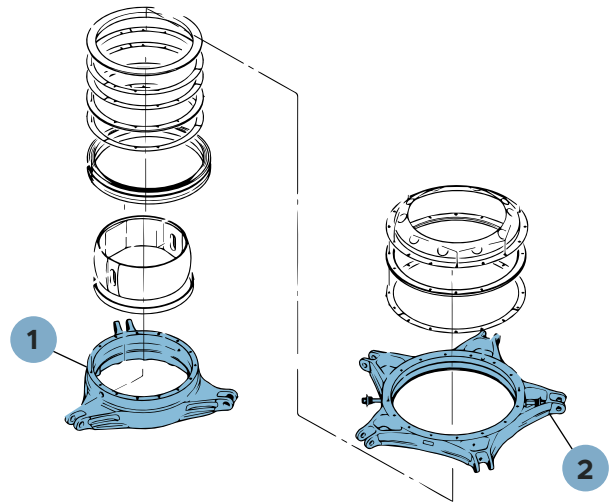
TRANSMISSION

- 1 Anti-Torque Beam | 3G6330A00552



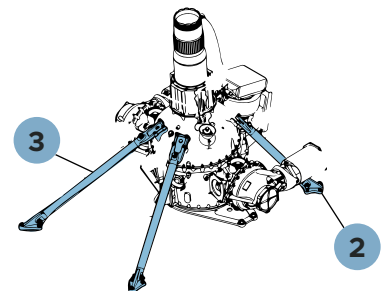
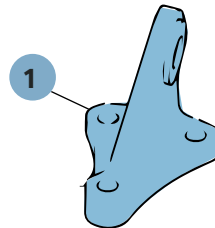
SWASHPLATE

- 1 Fixed Swashplate Assembly | 3G6230A00231
- 2 Rotating Swashplate Assembly | 3G6230A0033X



MISCELLANEOUS

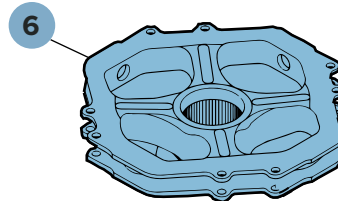
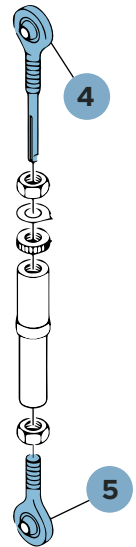
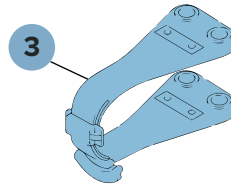
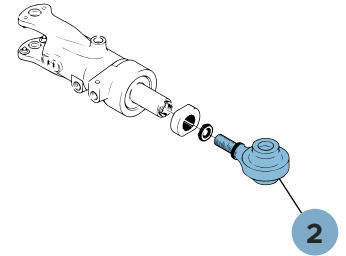
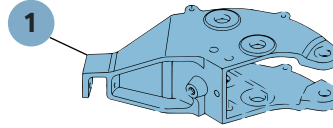
- 1 AFT/FWD Fitting | 3G6330L00131
- 2 AFT Gearbox Mount Rod | 3G6330V00231
- 3 FWD Gearbox Mount Rod | 3G6330V00131



AW109

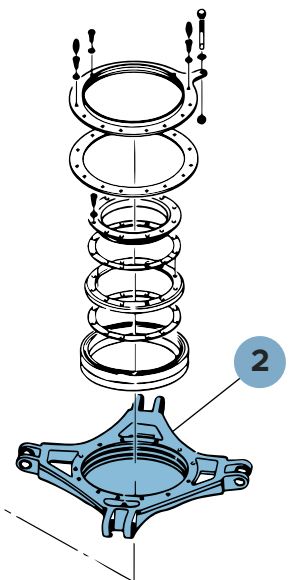
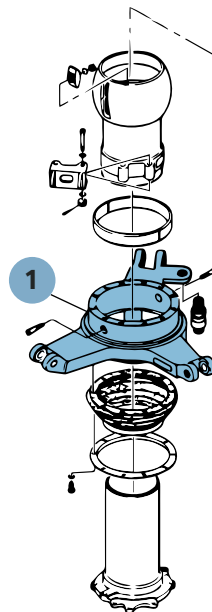
MAIN ROTOR HUB

- 1 Control Lever | 109-0112-04-XXX
- 2 Rod End Assembly | 109-0112-11-XXX
- 3 Grip Assembly | 109-0112-03-XXX
- 4 Rod End | 109-0134-06-XXX
- 5 Rod End Assembly | 109-0110-73-XXX
- 6 M/R Hub Assembly | 109-0111-03-XXX



SWASHPLATE

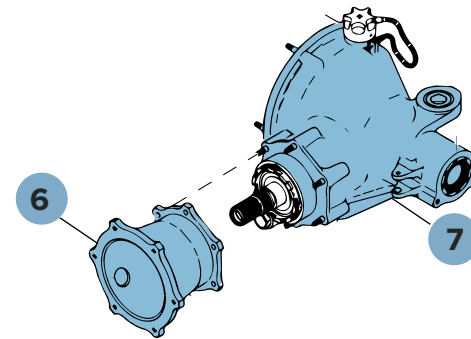
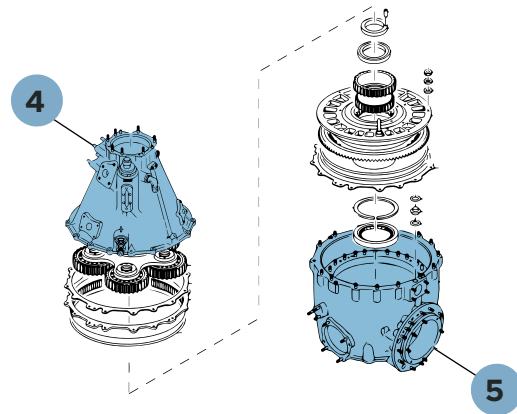
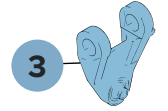
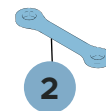
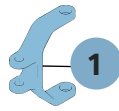
- 1 Fixed Swashplate | 109-0110-63-X
- 2 Rotating Swashplate | 109-0134-03-XXX



AW109 & AW119

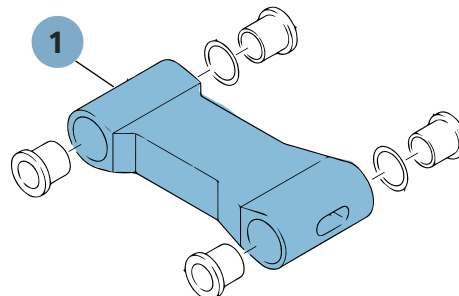
AW109

- 1 Lever Assembly | 109-0130-43-XXX
- 2 Connecting Link | 109-0133-04-XXX
- 3 Rotating Half-Scissor Assembly | 109-0134-10-XXX
- 4 Cover Assembly | 109-0402-24-XXX
- 5 Main Transmission Housing Assembly | 109-0402-25-XXX
- 6 Sleeve | 109-0435-31-1
- 7 Housing | 109-0442-01-XXX



AW119

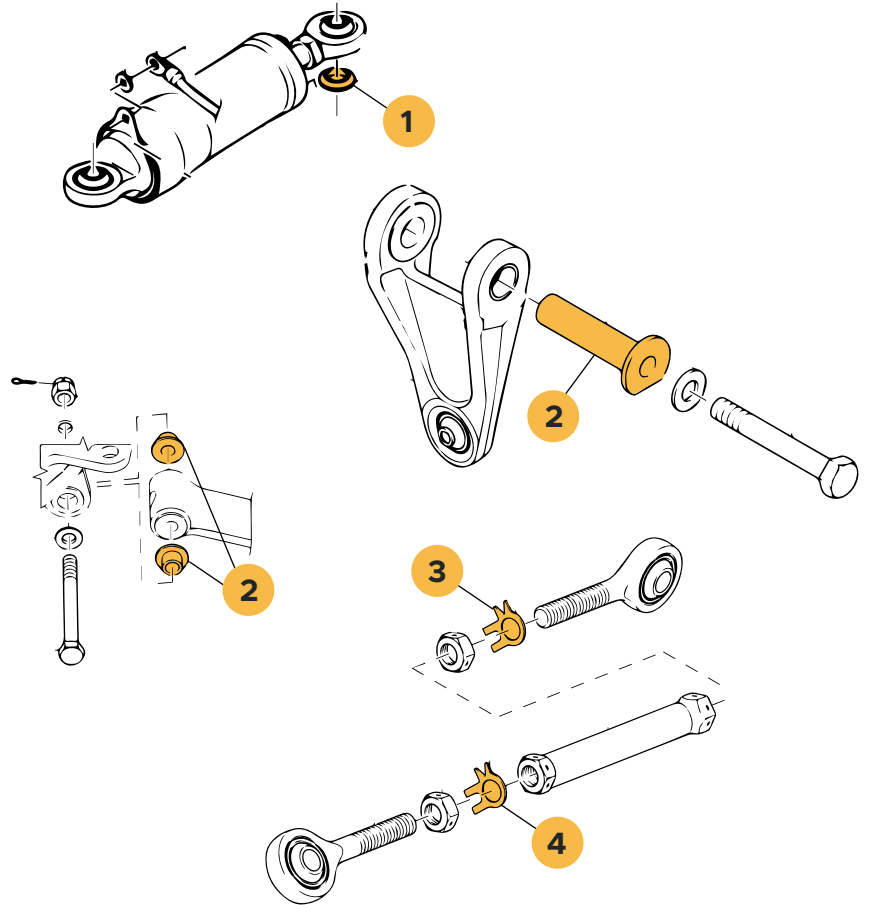
- 1 Rotating Half-Scissor Assembly | 109-8110-16-1



AW139 PMA

MAIN ROTOR ACTUATOR

- 1 Teflon Washer | 3G6220A05051
- 2 Sleeve | 3G6230A03752
- 3 Lock Washer | 3G6430A01851



TORQUE TUBE ASSEMBLY

- 1 Bushing | AW005BR095-C

